

AristTM ParcelSync Pro

Powered by FARRAGUT

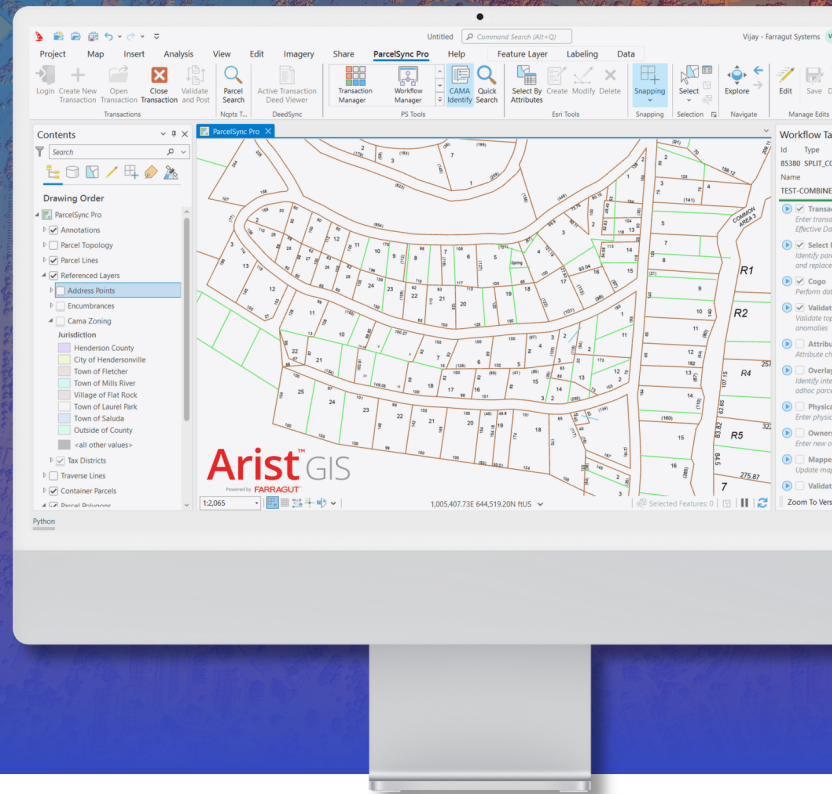
FARRAGUTTM

Transforming Parcel Management

ParcelSync Pro offers a suite of **powerful** features designed to improve data quality, streamline operations, enhance productivity, and drive efficiency.

Our solution **seamlessly integrates** parcel data management across GIS, Tax, and Deeds systems, providing **accurate parcel information** for your County and its taxpayers.

With a centralized map configuration and real-time transaction management, **ParcelSync Pro** ensures data synchronization across your entire parcel-user base.



TRANSFORM Your Parcel Management System



Flexible Workflow

- **Aligned with Existing Processes:** ParcelSync Pro seamlessly integrates with your current workflows, minimizing disruption and ensuring a smooth transition.
- **Configurable Workflows:** Create or configure your own workflows, tasks, rules, or validations within an extensible framework.



Enhanced Efficiency and Performance

- **Bulk Operations:** Improve productivity while ensuring accuracy through data validation checks to maintain data quality.
- **Edit & Maintain Supporting Layers:** ParcelSync Pro provides the ability to edit and maintain various supporting layers simultaneously, generating efficiencies and ensuring data accuracy.



Familiar Environment

- **Benefits from ESRI Updates:** Stay ahead with the latest ESRI updates, leveraging familiar tools and features to reduce the learning curve and enhance user experience.
- **Easy Onboarding:** The intuitive interface and comprehensive training resources make it easy to cross-train or onboard new team members, reducing downtime and accelerating productivity.

Transform Your Parcel Management System!

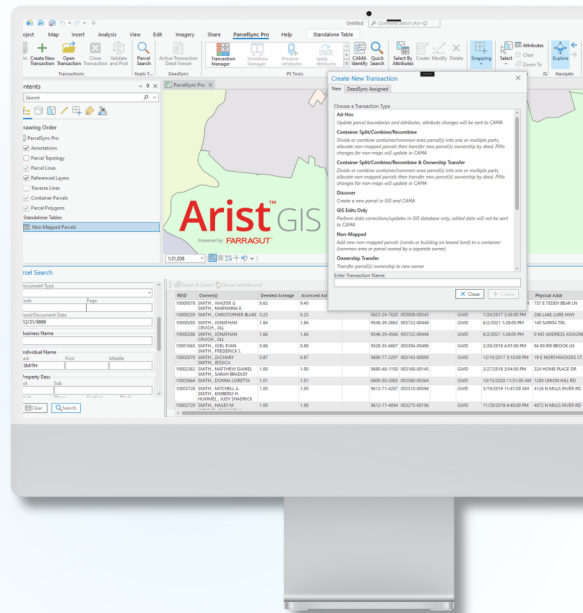


Workflows

- **Efficient Parcel Maintenance:** Predefined steps to quickly complete parcel edits.
- **Easy Onboarding:** Simplifies training for new employees.
- **Flexible Framework:** Aligns with customers' business rules and integration needs.

Workflow Use Cases:

- Splitting and combining parcels
- Creating new subdivisions
- Updating parcel attributes
- Managing jurisdictional boundary changes
- Maintaining condos & leaseholds (non-mapped parcels)



Transactions

- **Task Execution:** Workflows are executed by transactions and its tasks
- **Synchronization:** GIS changes sync across systems, SDE versions, and data warehouses.
- **Durability and Multi-User Support:** Complete tasks at your pace, with multiple users working in parallel.



Integrations

- **DeedSync Integration:** Interface with Register of Deeds/Land Titles, auto-fill data, and refer scanned documents.
- **Land Record System Integration:** Sync parcel maintenance activities in real-time.



Customization

- **Tailored to Your Needs:** Customize maps, layers, workflows, tasks, and parcel attributes.
- **ArcGIS Pro Integration:** Interact with ArcGIS Pro commands and tools via task configurations.



Extensibility

- **Custom Integrations:** Integrate with external systems before, during, or after transaction sessions.
- **Custom Workflows and UI:** Develop bespoke workflows and user interfaces.



Data Quality

- **Quality Tools:** Data input validations, GIS conflict detection, edit tracking, and reports.
- Avoid having to replicate data entry in multiple locations.



Data Warehouse

Change Tracking: Track and sync all transactional changes (spatial or non-spatial) with the ParcelSync Pro warehouse.



Implementation & Deployment

- **Quick Setup:** Test environments ready within weeks for pre-supported integrations.
- **Easy Updates:** Apply application updates in minutes.

Book a Demo



Ready to transform your parcel management system?

Contact us today to see how Arist ParcelSync Pro can work for you. Let's make property appraisals simpler, faster, and more accurate together.